

Renew America Nonprofits – Rocky Mountain (RAN-RM) Program

Overview



RAN-RM Program



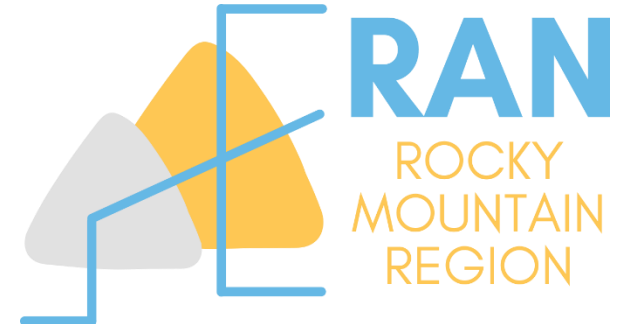
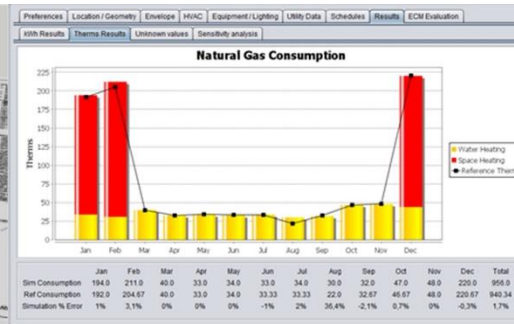
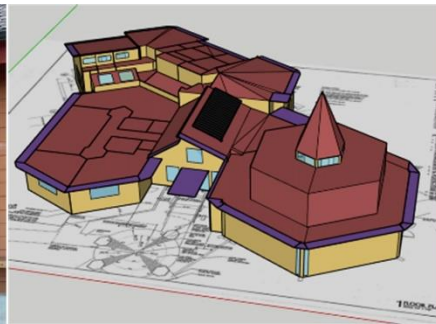
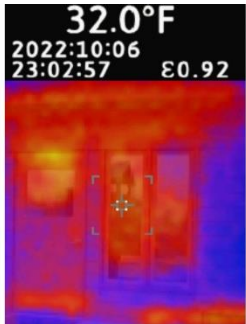
Title: Renew America's Nonprofits for Rocky Mountain Region (RAN-RM)

Summary: RAN-RM team, lead by University of Colorado, will demonstrate an optimized, scalable, and sustainable model to retrofit nonprofit facilities located in Rocky Mountain region (Colorado, Idaho, Montana, Utah, and Wyoming). The model is based on a rigorous and gradual evaluation approach to systematically select suitable facilities and optimal impact energy efficiency measures.

Budget: \$8,000K (DOE funds: \$5,700K + Cost Share from Partners: \$2,300K)

Website: www.ranrm.com

Target: Reductions of energy use and carbon emissions by 25% for entire Portfolio



RAN-RM Partners



RAN-RM CU Team



University of Colorado **Boulder**

Principle Investigator: Prof. Moncef Krarti, PhD, PE, LEED-AP

Co-Principle Investigators: Prof. Gregor Henze, PhD, PE and Prof. John Zhai, PhD

Administrative Manager: Nicholas Clements, PhD

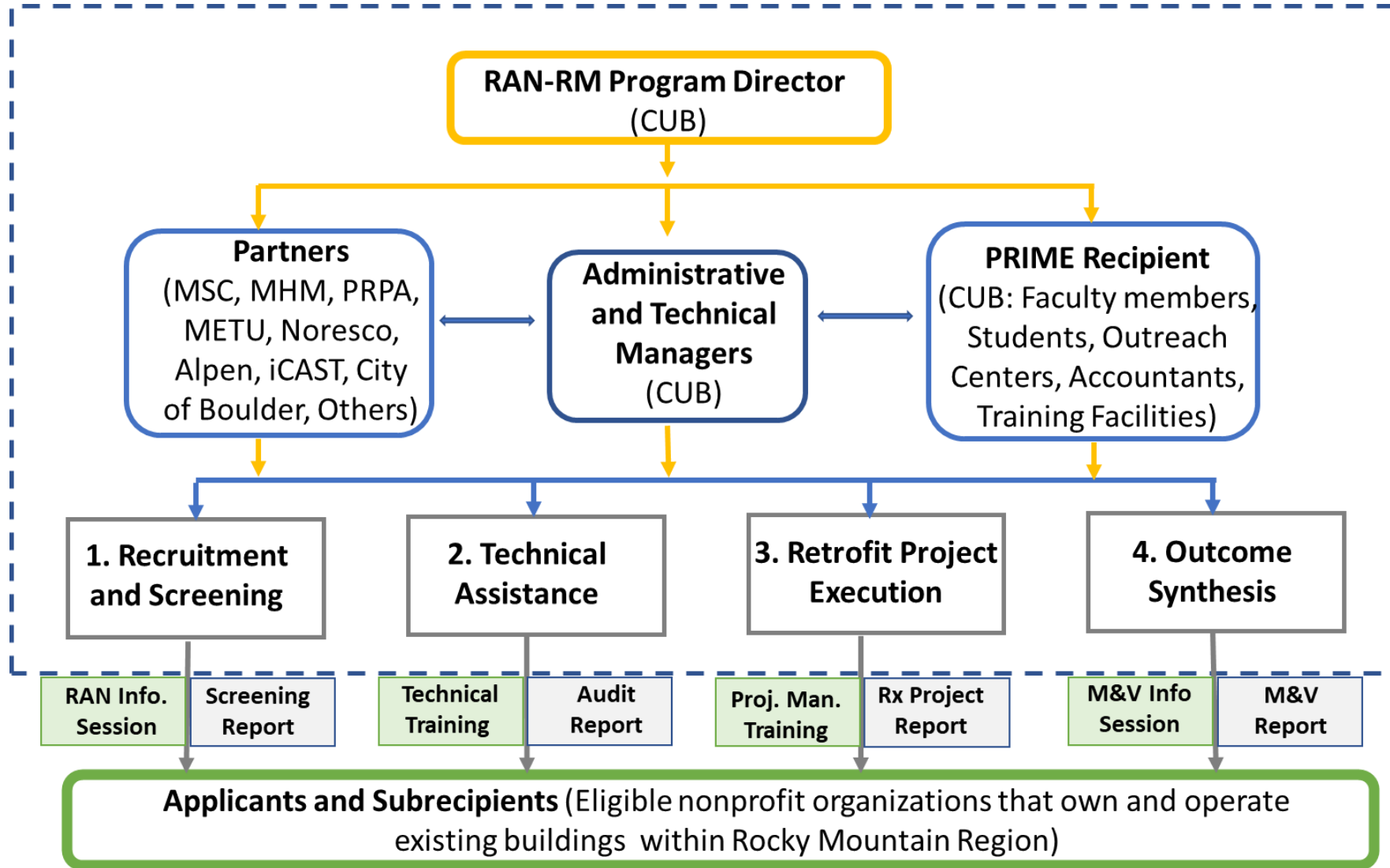
Technical Manager: Ashit Harode, PhD

Recruiting Assistant: Todd Allen

Finance Team: Kathleen Kutzman, Erica Archer, Bernadette Garcia

Students: Phani Valadi, Raj Ostawal, Harrison Gannon

RAN-RM Program Management Structure



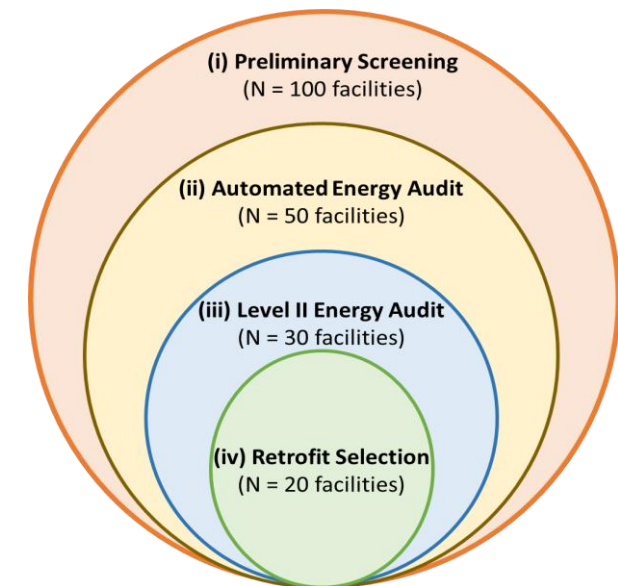
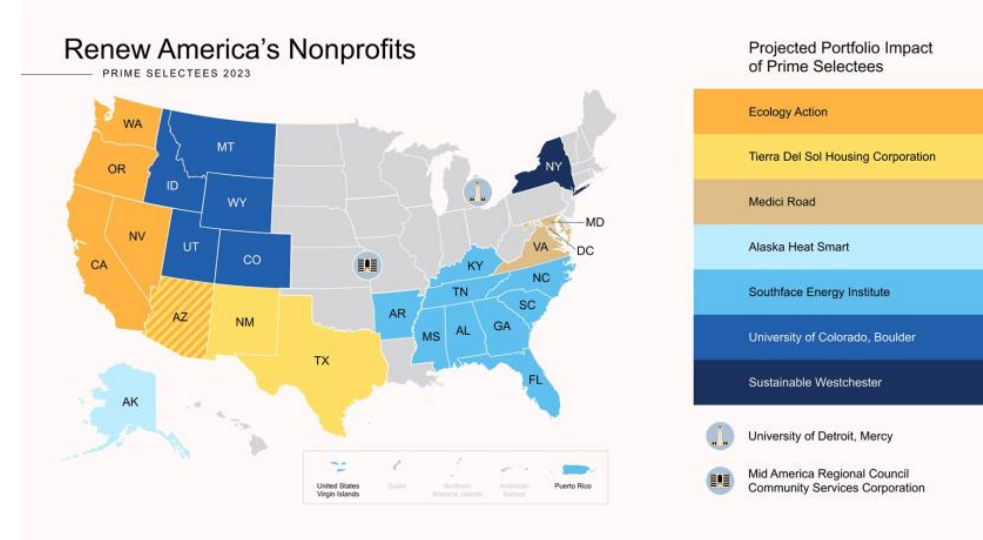
RAN-RM Program



Program Approach: The model is based on a rigorous and gradual evaluation approach to systematically select suitable facilities and optimal impact energy efficiency measures.

Program Measurable Outcomes:

- ❑ Collect Data and Prescreen 100-140 nonprofit facilities (over two application periods).
- ❑ Conduct level 1 energy audits for 60-80 prescreened and eligible nonprofit facilities.
- ❑ Complete level 2 energy audits for 40-60 facilities that underwent level 1 energy audits.
- ❑ Retrofit a set of 24-36 nonprofit buildings from those facilities screened through level 2 energy audits and other RAN program criteria.
- ❑ Train 6-8 students to be proficient in energy efficiency analysis of existing buildings.



RAN-RM Program



Program Approach: 4 Phases



Plan & Recruit

Recruit and collect basic data from potential subrecipients about facilities owned and operated by nonprofits



Technical Assistance

Perform technical analysis including utility data prescreening followed by level I and level II audits for a final selection of final list of subrecipients.



Project Execution

Assist selected and approved subrecipients to implement the retrofit projects including scheduling and selection of subcontractors.



Outcome Synthesis

Conduct Measurement and Verification (M&V) analyses for all facilities after the completion of the retrofit projects.

RAN-RM Program



Budget Period 1 – Phase 1: Outreach and Recruitment

- ❑ Recruit and collect basic data for eligible nonprofits within Rocky Mountain from RAN-RM Partners
- ❑ Direct applications through the website.

Eligibility Criteria:

- A 501c3 nonprofit organization
- Has a SAM.gov registration number
- Owns and operates the building
- Not located in 100-year floodplain or other hazard zones.

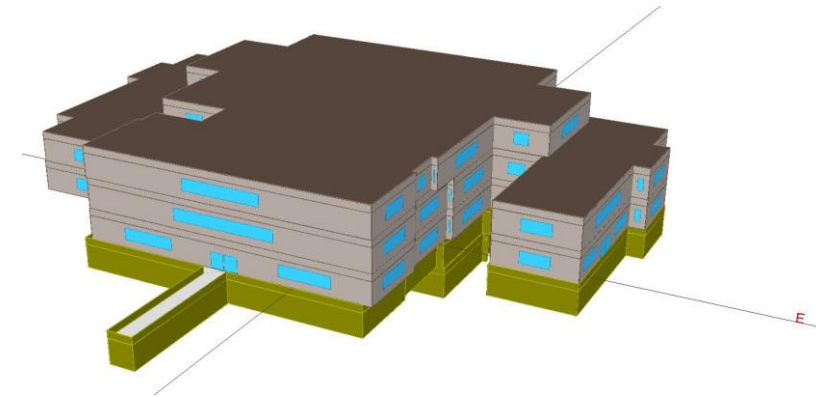
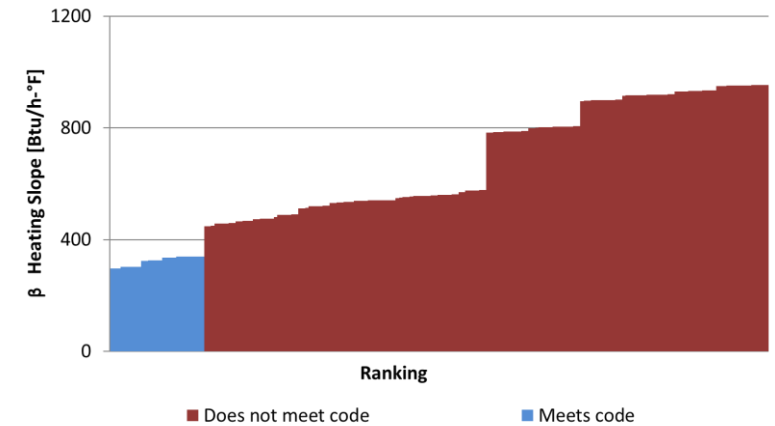


RAN-RM Program



Budget Period 1 – Phase: 2 Technical Assistance and Assessment

- Perform a benchmarking analysis to assess potential energy efficiency level
- Conduct level 1 energy audit with recommendations for energy efficiency improvements for pre-selected facilities.
- Complete level 2 energy audit for facilities using optimization-based analysis with the highest potential for energy use reductions.
- Submit a set of portfolio of eligible facilities for DOE funding preapproval with potential of at least 25% savings in annual energy use.



RAN-RM Program

Phase 2: Selection Model



Preliminary Screening: based on basic information from applications of recipients, the energy inefficiency level is assessed to identify the most buildings with the highest energy efficiency impacts (Main team member: CUB)



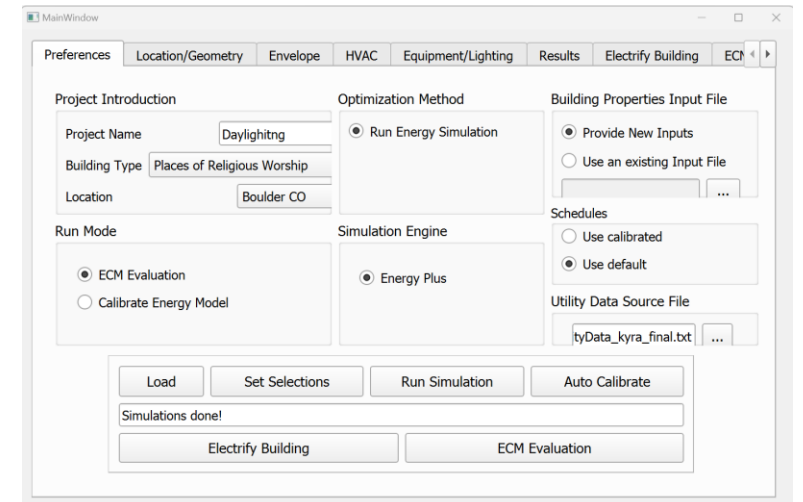
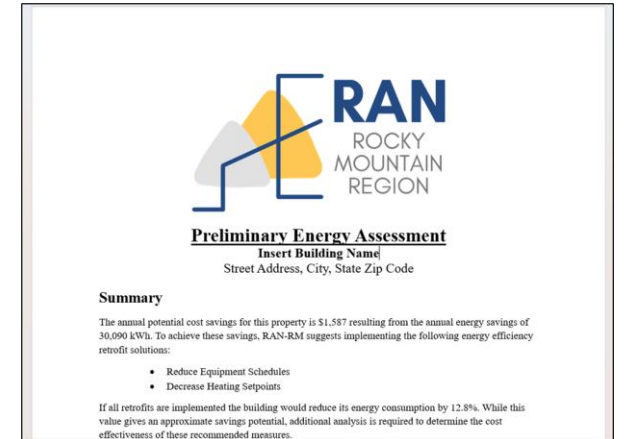
Automated Energy Audit: For the recipients selected after the preliminary screening, the potential energy savings from retrofit is estimated using energy analysis tool (Main team member: CUB)



Perform Energy Audit: For the selected recipients with high potential for energy savings, energy audit including walk through and calibrated modeling (Main team member: CUB and iCAST)



Select Recipient for Retrofit: Based on various metrics, select buildings for energy retrofit (Main team member: DOE, CUB, and Partners)

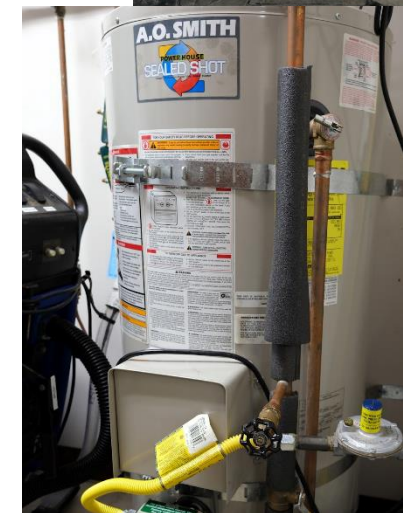


RAN-RM Program



Budget Period 2 – Phase 3: Execution and Management of Retrofit Projects

- ❑ Get DOE approval for funding selected facilities.
- ❑ Set retrofit management teams as well as a list of potential subcontractors
- ❑ Assist nonprofits in scheduling and executing retrofit projects.
- ❑ Ensure retrofit execution meets NEPA, BACA, and Bacon-Davis requirements.
- ❑ Conduct retro-commissioning of the completed retrofit projects.

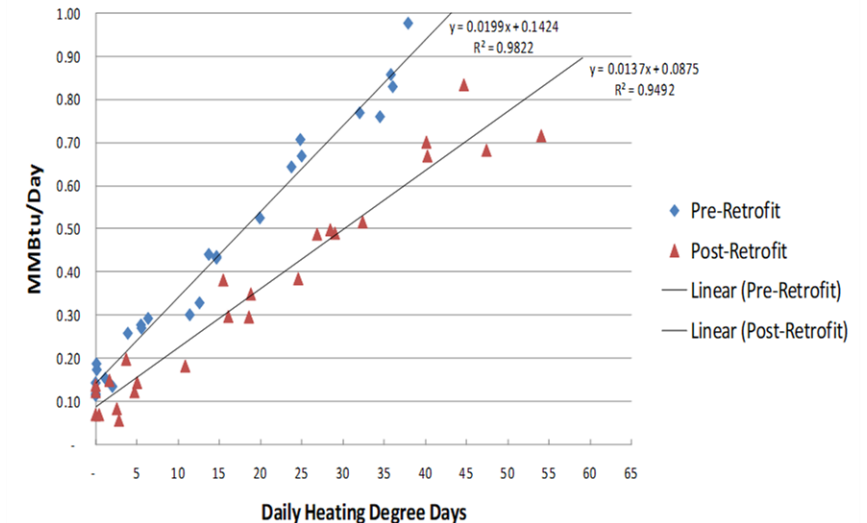
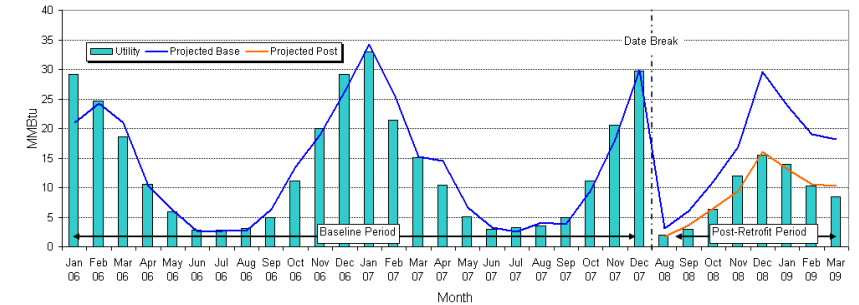


RAN-RM Program



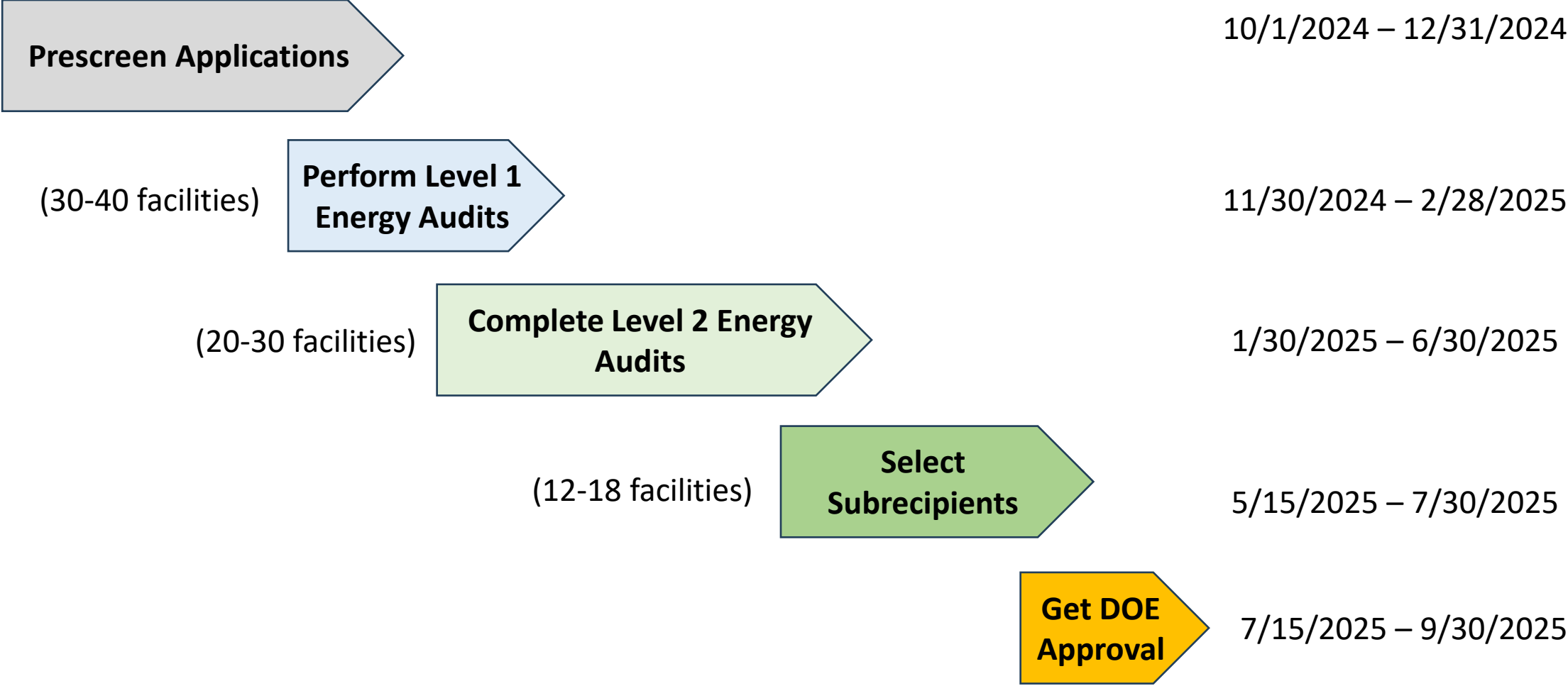
Budget Period 3 – Phase 4: Assessment of RAN-RM Outcomes

- ❑ Collect energy performance data after completion of the retrofit projects.
- ❑ Identify any identified execution issues with the retrofitted facilities.
- ❑ Perform M&V assessments for all completed retrofit projects using options C and D of IPMVP.
- ❑ Estimate the actual reductions in energy use, energy cost, and carbon emissions from the retrofitted portfolio.
- ❑ Document the community benefits for all the completed retrofit projects.



RAN-RM Program

Budget 1 Milestones

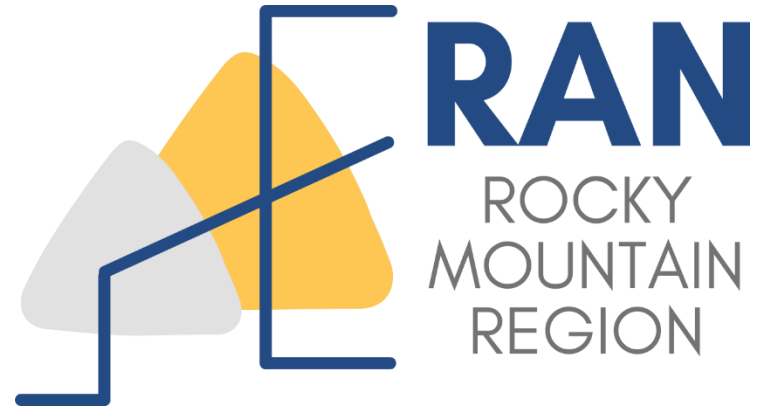


Expected Outcomes



Expected Outcomes of RAN-RM program:

- *Benefit all applicants with an energy assessment analysis of their facilities. Other will receive level 1 and level 2 energy audits.*
- *Leverage DOE funds with other cost-share funds and incentives to retrofit facilities (expected RAN-RM grants to range from \$20K up to \$200K per facility).*
- *Develop a sustainable and scalable RAN-RM program beyond DOE funding period through the development of an online energy retrofit tool.*
- *Train future workforce for energy auditors and building managers.*
- *Disseminate analysis approaches and tool as well as best practices based on execution of all phases of the RAN-RM program.*



Thank You

